



ARRIVING IN SPRING 2022

High style and high performance unite in our fully seam-sealed jacket. Functional design details like a three-panel locking drawstring hood, an interior storm flap and reinforced waterproof zipper help keep rain at bay. Store essentials in the reverse-coil zip pockets. Interior locker loop for drip-dry hanging.

Fabric+Weight

- 100% poly twill face fabric bonded to a waterproof laminate-protecting grid print
- 10k/10k waterproof breathable fabric

Features+Benefits

- Fully seam-sealed
- Durable water-repellent (DWR) finish
- Adjustable brimmed hood with locking drawcord
- Interior locker loop
- Waterproof zipper
- Full-length interior storm flap with chin guard
- Hidden reverse-coil zip pockets
- Adjustable, locking drawcord hem

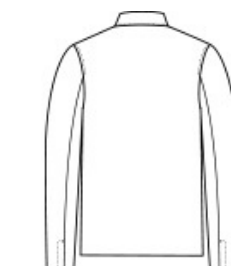
**

CARE INSTRUCTIONS

Machine Wash Cold Separately. Do Not Use Fabric Softener.
Non-Chlorine Bleach, When Needed. Tumble Dry Low. Do Not Iron. Do Not Dry Clean.

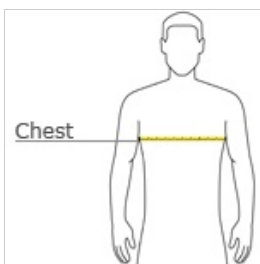


front



back

HOW TO MEASURE



CHEST WIDTH

Measure under the arm and around the fullest part of the chest with arms down, keeping tape horizontal.

SIZE CHART

| | XS | S | M | L | XL | 2XL | 3XL | 4XL |
|-------|-------|-------|-------|-------|-------|-------|-------|-------|
| Chest | 32-34 | 35-37 | 38-40 | 41-43 | 44-47 | 48-51 | 52-56 | 57-61 |

COLOR INFORMATION



Anchor Grey
PMS 426C



Deep Black
PMS Black C